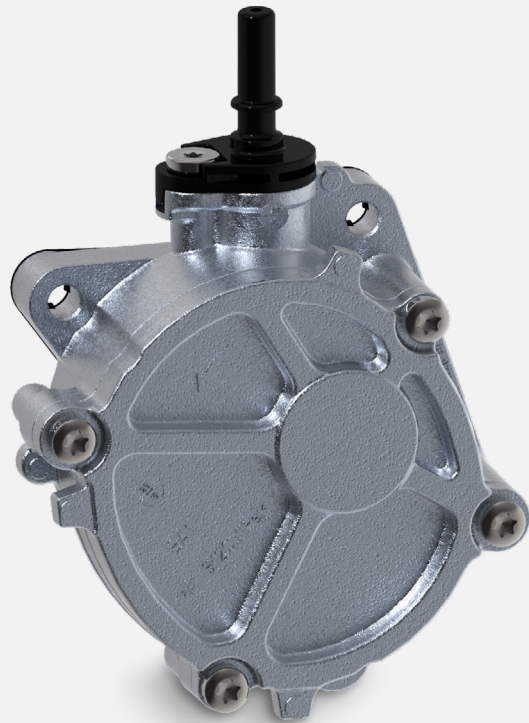


# Mechanical vacuum pump

## Single-vane pump for braking system

High efficiency and optimized design to maximize driving comfort and reduce emissions



### Emission reduction

-0.6 g CO<sub>2</sub>/km thanks to optimized torque absorption (compared to the average market level of new applications)

### Weight reduction

-200 g per pump, thanks to the use of thermoplastic rotor, resulting in more dynamic driving behavior and lower CO<sub>2</sub> emissions

### Optimized design

Modular design, engineered to guarantee a noise reduction

#### TECHNICAL CHARACTERISTICS

Direction of rotation	Clockwise/counterclockwise
Lubrication	Engine oil
Drive	Driven directly by engine camshaft or crankshaft via pulley, gear or chain

- Designed to ensure the vacuum supply for the pneumatic operation of various components in diesel and modern gasoline engines
- Particularly efficient operation, thanks to optimized design and very light thermoplastic rotor, and noise reduction at low idle speed for a higher driving comfort
- Highly versatile: drivable either by engine camshaft or by crankshaft via pulley, gear or chain; combinable with an oil and/or fuel pump, including high-pressure pump